

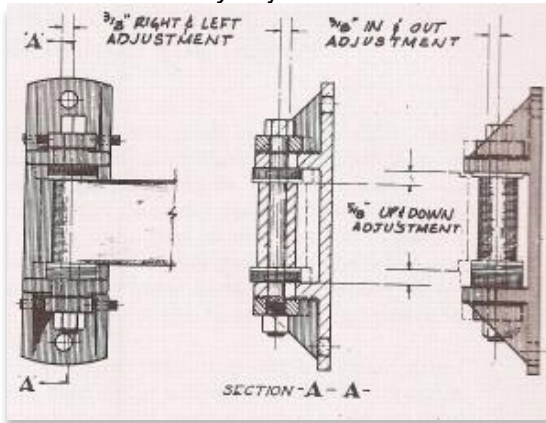


Type H-417

Six-way Adjustable Heavy-Duty "Blast Rated" Hinge



Our Six-way Adjustment Feature



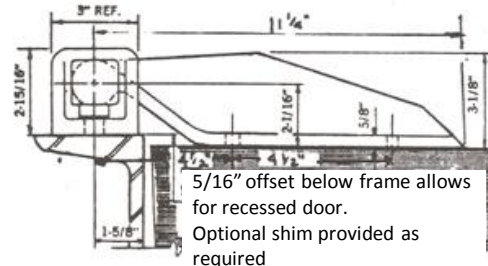
OPTIONS:

- Larger Diameter Bolt
- Security Fasteners
- Zinc-Nickle Plated 5/16" x 3" x 11" shim as required

Extra heavy and extra high capacity of H-417 hinge exceeds capabilities of H-412 hinge. Patented adjustable features allow door to be adjusted in all six possible directions during installation and forever after to re-establish perfect alignment and plumb swing. The "blast" and extra load carrying capacity are achieved by gusset in cast ductile iron strap, socket head (120,000 psi) pintle bolt and socket head fasteners.

Type H-417 hinge has standard offset below frame. For flush conditions, shim is provided as an option. Standard composition of blast hinge pintle and strap are ductile iron 604018, exceeding the properties listed in the analysis section. Lifetime lubricated iolite bronze thrust and radial bearings allow minimal openings/flossing pressure. Hinges furnished assembled.

Standard finish U.S. Prime. Standard weight 20 lbs.



Specifications

Door hinges shall be ADHACO Six-Way Adjustable "Blast" Type H-417. Hinge design shall provide for strap (and door) adjustments, minimum 3/8" left or right and in or out with 5/8" adjustment up or down. All adjustments to be made while doors are hanging in place without loosening or removal of either the hinge pintle or strap.

Hinge straps and pintles shall be ductile iron. Radial and thrust loads shall be borne by lifetime lubricated bronze oilite bearings. All fasteners and pintle bolts shall be socket head cap screws with min. 120,00 PSI tensile strength.

The quantity of hinges shall be determined by door width, height and weight together with the pressures to which the door may be subjected. Manufacture shall furnish, when required, a blast analysis which will show that each hinge will resist a minimum pressure, in either direction, of 12,250 pounds (with a 2 to 1 safety factor)